

Images by: BIG

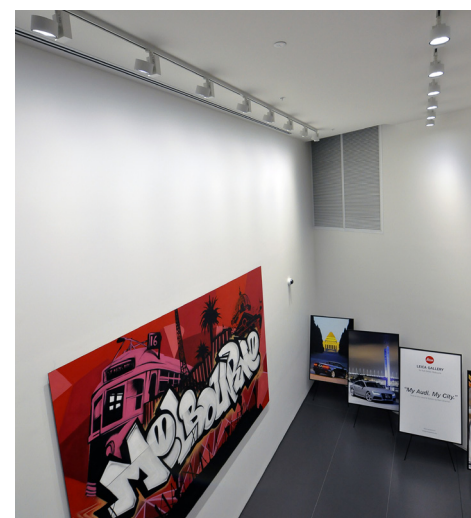
ERCO - Audi Centre Swanston Street, Melbourne

The new Audi Centre Melbourne Showroom, at 501 Swanston Street, Melbourne, was officially opened November 2014. With over 50 vehicles on display, the largest Audi showroom in the southern hemisphere spans more than 5000 square metres in size across 3 levels.

Engineers at **Simpson Kotzman**, from the Melbourne office, specified the ERCO Optec LED spotlights and wallwashers for the impressive state-of-the-art showroom. The energy efficient luminaires are used to highlight the brands RS and R8 special wheels selections and the exclusive vehicle accessories on the Audi Sport level. The 24W, 4000K luminaires were specified with DALI control gear and in black colour finish to blend with the black ceiling surface. While in the gallery area, Optec spotlights and wallwashers in white colour are used to illuminate a large piece of artwork and a few freestanding graphic elements.

The showroom architecture is simple in its form, but features precise detailing, which is a true reflection of the Audi design philosophy in the vehicles themselves. The overall design separates the showroom and customer spaces clearly, so that it is easy for people to connect with the vehicles, or to enjoy the surroundings of the café and lounge areas.

The brand's innovation and forward-thinking is represented with the use of low energy, high efficiency LED lighting and other environmentally friendly features that sets the bar high for competitors in the region. This sends a powerful message in the retail car industry,



where many are still using standard high wattage luminaires to illuminate their showrooms.

For more project images, please visit our **website**.

The B.I.G. Team

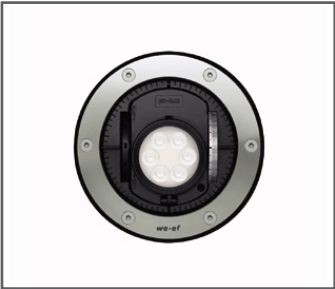


Optec LED Spotlight
<<< **Product information**



WE-EF Brighton's Green Point War Memorial

In order to celebrate the Anzac Centenary, many war memorials in Australia were given a face-lift with several having new luminaires installed or upgraded to a more energy efficient version. That is the case for the Brighton's Green Point War Memorial where three WE-EF ETC330-GB 12W LED inground luminaires were used to illuminate the sandstone obelisk, while the ETC330-FS 24W version was used to uplift the three new flagpoles installed on site. All luminaires were specified with a medium beam distribution and in 3000K colour temperature.



ETC330 - GB
Product information >>>



ETC330 - FS
Product information >>>

New ERCO Starpoint Recessed LED Spotlight

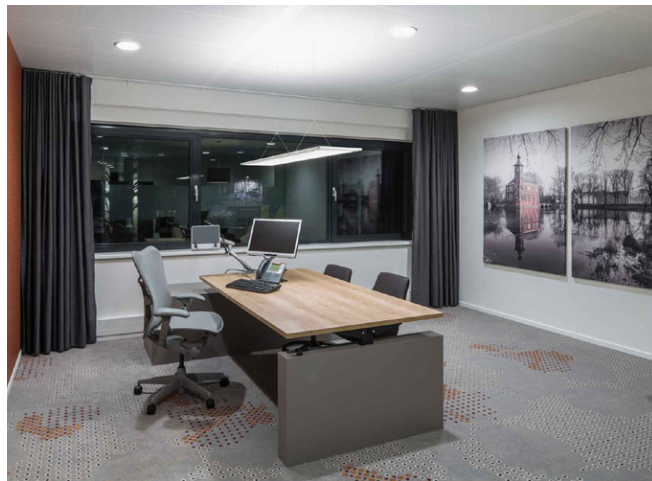


The discreet ceiling aperture of the Starpoint recessed spotlight conceals a master of accentuation and wash-lighting. Designed in a compact format, the luminaires are available with five different light distributions. As a versatile system, it allows the illumination of restaurant interiors, hotel rooms and homes, creating a wide variety of eye-catching features. With covered or flush mounting detail, the luminaire caters to different room situations.

Starpoint LED Spotlight
Product information >>>



New Trilux Lateral Plus, LED Pendant



Even when switched off the extremely flat suspended luminaire with a transparent cover blends stylishly into all interiors. But the Lateral Plus LED's real strength is in operation: it supplies maximum visual comfort and almost shadow-free, planar light. This is made possible thanks to the innovative light control with an especially wide indirect light component. It also simplifies lighting design and interior design because the uniformly wide light distribution enables variable distances to the ceiling.

Lateral Plus
Product information >>>



OUR BRANDS

ERCO

we-ef



TRILUX
NEW LIGHT.

megabay
ILLUMINATE YOUR WORLD

CASTALDI
LIGHTING

Copyright © 2015 Buckford Illumination Group, All rights reserved.

Our mailing address is:

Buckford Illumination Group
PO Box 609
Port Melbourne, VIC 3207

Phone: 03 9646 8201
Email: sales@buckford.com.au

Add us to your address book