



Kathleen Syme Library and Community Centre, Carlton.

The Kathleen Syme Library and Community Centre re-opened in Carlton, following a \$15.5 million refurbishment of the building that was previously used as an education centre for the Royal Women's Hospital. The site, listed on the Victorian Heritage Register, cost the council \$4.88 million. **Meinhardt Australia** provided building consultancy services to deliver a greener infrastructure for this historic community landmark.

The restoration of the Kathleen Syme building has managed to see this 19th-century building fitted with 21st century sustainable solutions and technology. This includes the lighting system, where WE-EF DOR120 12W and DOC240 48W are used within the libraries as part of the general lighting, while WE-EF DOC220 24W are used to illuminate the building corridors. Responding to the brief from the Interior Designer and the City of Melbourne, **ISM Objects** custom designed and manufactured special housings and pendant shades to convert the recessed luminaires into decorative surface mounted and suspended light fixtures. The IP rated downlights were specified in 3000K with medium and wide flood beam distributions. The designers incorporated the outdoor fixtures into the pendants together with LED strip, all with dual DALI dimming circuits. The result is an efficient lighting solution with beautifully-crafted luminaires that easily blend with the interior architecture.

Other parts of the building, such as the two staircases and common areas, are softly lit with the Trilux Deca WD3 LED wall light with opal diffuser. The wall-mounted luminaire was specified with a decorative cover in silver finish.



The centre – which houses a recording studio, computer lab, conference rooms and meeting spaces – will also be used for planned activity groups for seniors, talks by the Carlton Community History Group and meetings of the Carlton Senior Citizens Group.

For more project images, please visit our **website**.

The B.I.G. Team



DOC200 LED Luminaires
Product information >>>



DOR100 LED Luminaires
Product information >>>



DECA LED Wall Light
Product information >>>

WE-EF - Hadfield Park Solar Lighting

New path lighting at Hadfield Park in Wallan, Victoria provides a significant upgrade to this important local public space. The park is adjacent to the local shopping centre and includes a number of recreational facilities that have night time use within the park.

Nine WE-EF VFL540 LED 24W were installed along two concealed pathways to improve the visibility and increase natural surveillance at night. The luminaires are mounted on 6 metre poles and were specified in 4000K with a S60 “side throw” distribution to optimise pathway lighting. To increase energy efficiency, the VFL540 are solar-powered with solar components providing all night power and multi-day operation in the event of low solar radiation.

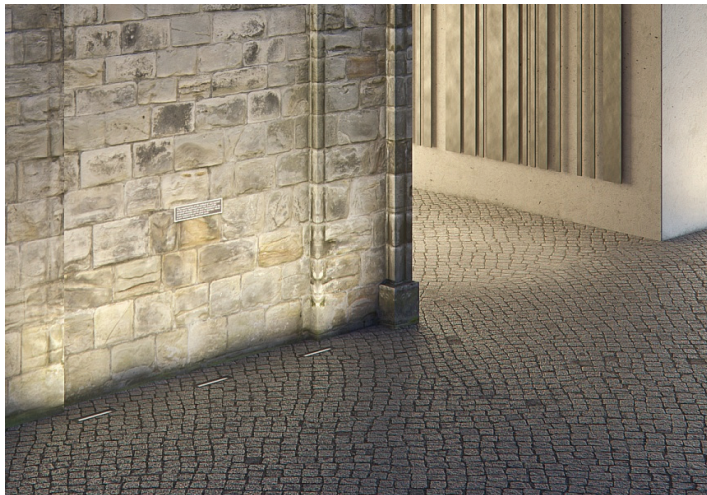
For more technical information, please contact our office.



VFL540 Street and Area Light
Product information >>>



ERCO - Site Grazing Light Wallwasher



The grazing light wallwasher brings out the finest wood, concrete or brick texture as exquisitely as rough surfaces such as natural stone, thereby enabling the luminaire to set off historic features or regional materials. In contrast to conventional wallwashers which give walls a soft character, Site adds an almost tactile dimension through high-contrast light and shadow effects. The luminaire can be tilted conveniently by up to 10° in both directions. With its asymmetrical light distribution, the grazing light wallwasher can be positioned up to 30cm from the wall and still produce an exceptionally uniform beam.

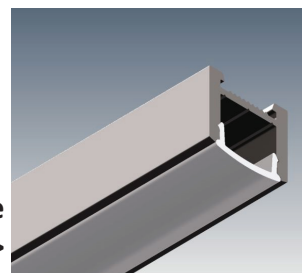


Site LED Wallwasher
Product information >>>

LED Profile - Downhill Dan 14



The Downhill Dan 14 is a compact LED linear system that can be surface mounted, recessed and suspended to cater for almost all lighting design applications. A recessing installation system is available to produce a trimless architectural detail on walls and ceilings and the opal diffuser delivers a dot-free lighting effect.



Downhill Dan 14 LED Profile
Product information >>>

OUR BRANDS

ERCO

we-ef



TRI LUX
NEW LIGHT.

megabay
ILLUMINATE YOUR WORLD

CASTALDI
LIGHTING

Copyright © 2015 Buckford Illumination Group, All rights reserved.

Our mailing address is:

Buckford Illumination Group
PO Box 609
Port Melbourne, VIC 3207

Phone: 03 9646 8201
Email: sales@buckford.com.au

[Add us to your address book](#)