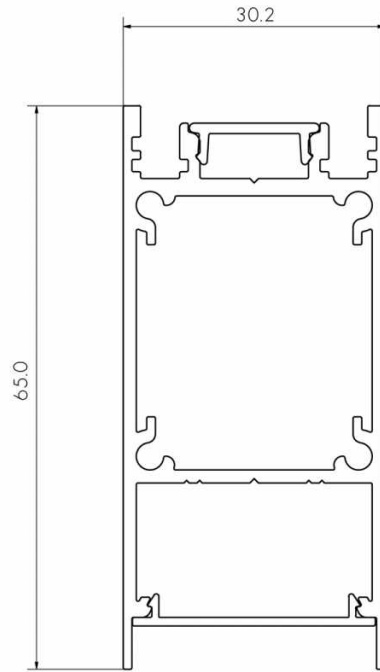


1

PRODUCT OVERVIEW

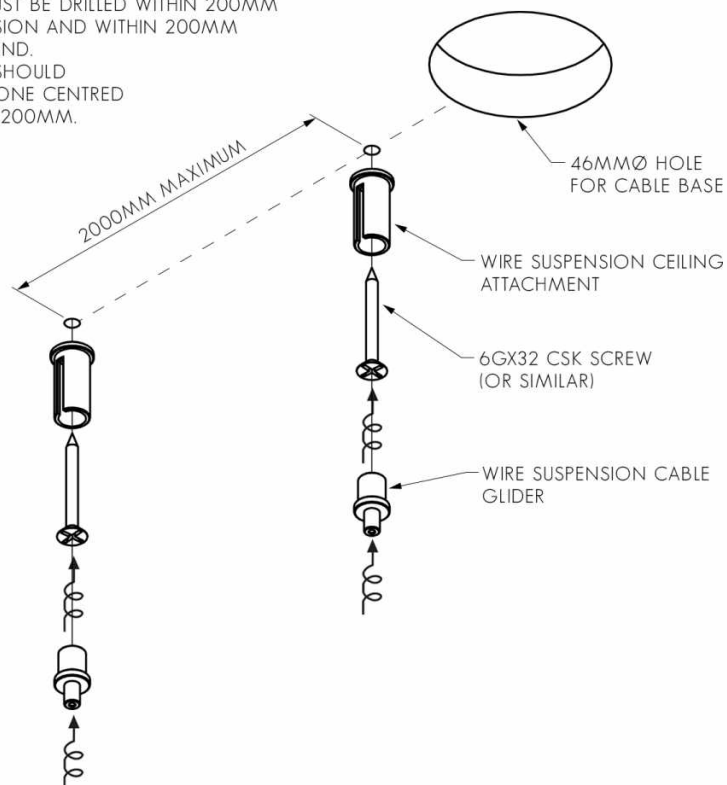


BOB EACH WAY 30

2

DRILL HOLES FOR SUSPENSION CEILING ATTACHMENTS AND INSTALL

NOTE: MOUNTING HOLES MUST BE DRILLED WITHIN 200MM OF EACH END OF THE EXTRUSION AND WITHIN 200MM EITHER SIDE OF A JOIN OR BEND.
E.G. A 2500MM EXTRUSION SHOULD HAVE 3 MOUNTING POINTS, ONE CENTRED AND ONE EACH END WITHIN 200MM.



3 JOIN EXTRUSIONS, INSTALL LED STRIP & DIFFUSER

1. IF USING MULTIPLE LENGTHS OF EXTRUSION, SLIDE EXTRUSIONS TOGETHER ON TO JOINER OR BEND PLATE (SEE FIG. 1).

2. FEED LED STRIP CABLE THROUGH HOLE IN EXTRUSION AND CLAMP USING CORD GRIP SUPPLIED. (SEE FIG. 2).

3. **IMPORTANT:** BEFORE MOUNTING LED STRIP, CLEAN EXTRUSION USING AN ALCOHOL BASED CLEANER.

4. REMOVE BACKING FROM LED STRIP TO EXPOSE STICKY SURFACE. LAY LED STRIP INTO EXTRUSION, USING THE SMALL GROOVES IN THE BACK OF THE EXTRUSION AS A GUIDE.

5. CLIP DIFFUSERS INTO EXTRUSION, ENSURING A FIRM CONNECTION (SEE FIG. 1).

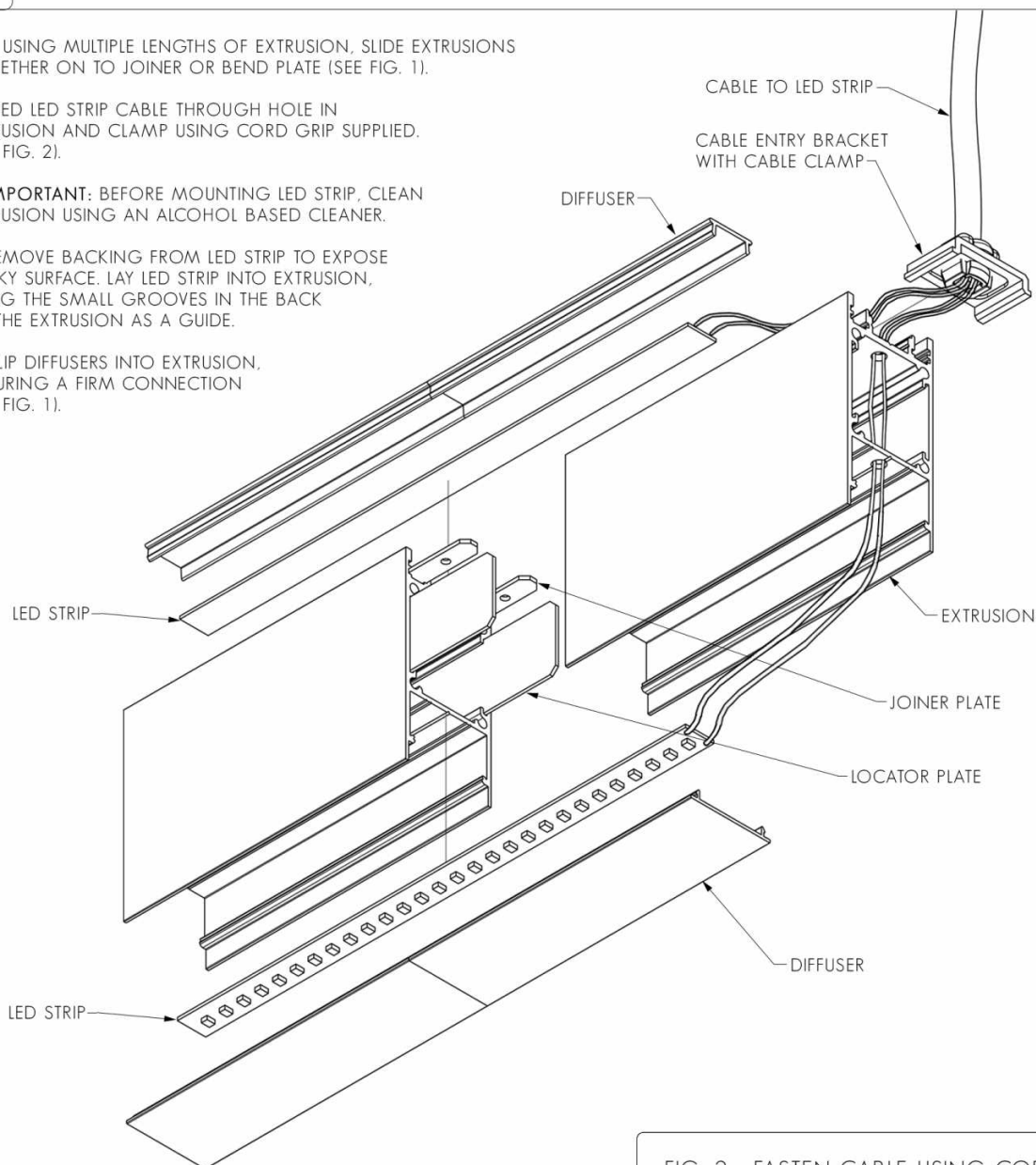


FIG. 1 - ENSURE DIFFUSER IS MOUNTED SECURELY

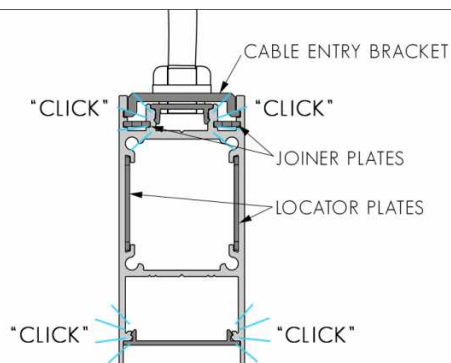
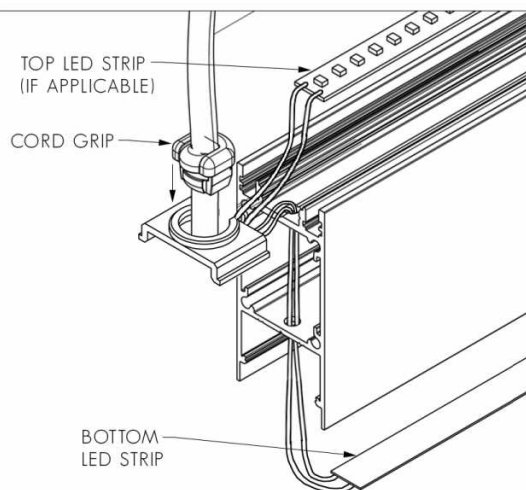


FIG. 2 - FASTEN CABLE USING CORD GRIP



4 INSTALL SUSPENSIONS, END CAPS, MAKE ELECTRICAL CONNECTION, INSTALL CABLE BASE,

1. FEED WIRE SUSPENSION CABLES THROUGH SUSPENSION BRACKETS, THEN SLIDE SUSPENSION BRACKETS IN TO TOP GROOVES EXTRUSION.

2. FEED WIRE SUSPENSION CABLES IN TO CEILING ATTACHMENTS. PRESS NIPPLE INWARDS TO ADJUST CABLE LENGTH (SEE FIG. 3).

3. ONCE CORRECT SUSPENSION HEIGHT HAS BEEN SET, CUT OFF EXCESS SUSPENSION WIRE USING SIDE CUTTERS. (SEE FIG. 3).

4. SLIDE END CAPS INTO ENDS OF EXTRUSION.

5. MAKE ELECTRICAL CONNECTION: CONNECT LED STRIP TAILS TO LED DRIVER.

6. PUSH CABLE BASE INTO HOLE IN CEILING (SEE FIG. 4).

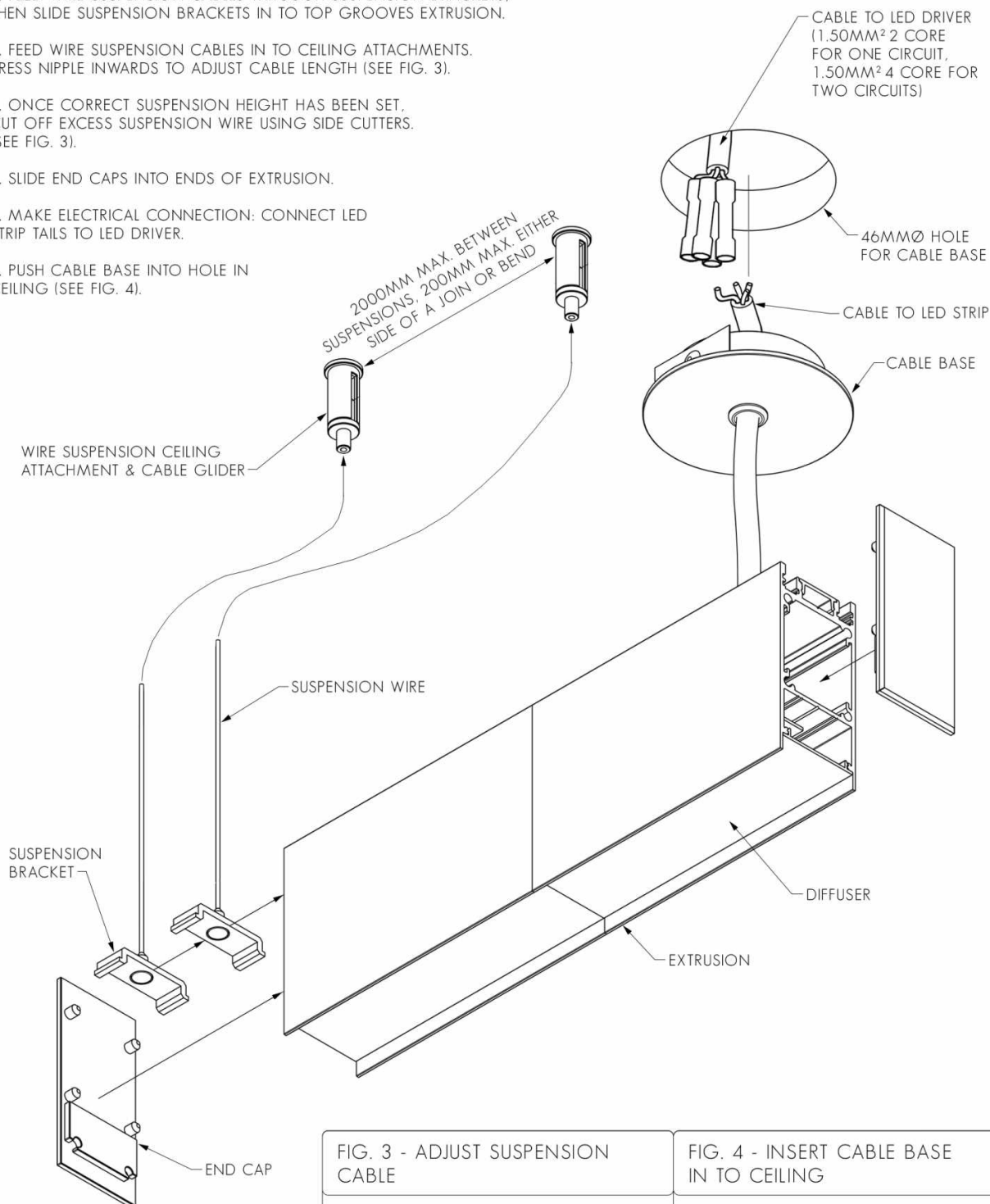


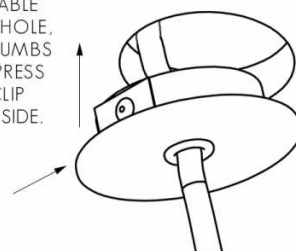
FIG. 3 - ADJUST SUSPENSION CABLE

ONCE SUSPENSION LENGTH HAS BEEN SET, CUT OFF EXCESS SUSPENSION CABLE

PRESS TO ADJUST CABLE LENGTH

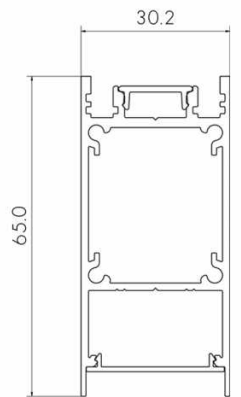
FIG. 4 - INSERT CABLE BASE IN TO CEILING

ANGLE CABLE UP IN TO HOLE, USING THUMBS TO COMPRESS SPRING CLIP ON ONE SIDE.



1

PRODUCT OVERVIEW



BOB EACH WAY 65

2

JOIN EXTRUSIONS, INSTALL LED STRIP & DIFFUSER

1. IF USING MULTIPLE LENGTHS OF EXTRUSION, SLIDE EXTRUSIONS TOGETHER ON TO LOCATOR PLATES & JOINER OR BEND PLATE (SEE FIG. 1 & 2).

2. FEED LED STRIP CABLE THROUGH HOLES IN EXTRUSION AS SHOWN.

3. **IMPORTANT:** BEFORE MOUNTING LED STRIP, CLEAN EXTRUSION USING AN ALCOHOL BASED CLEANER.

4. REMOVE BACKING FROM LED STRIP TO EXPOSE STICKY SURFACE. LAY LED STRIP INTO EXTRUSION, USING THE SMALL GROOVES IN THE BACK OF THE EXTRUSION AS A GUIDE.

5. CLIP DIFFUSERS INTO EXTRUSION, ENSURING A FIRM CONNECTION (SEE FIG. 1).

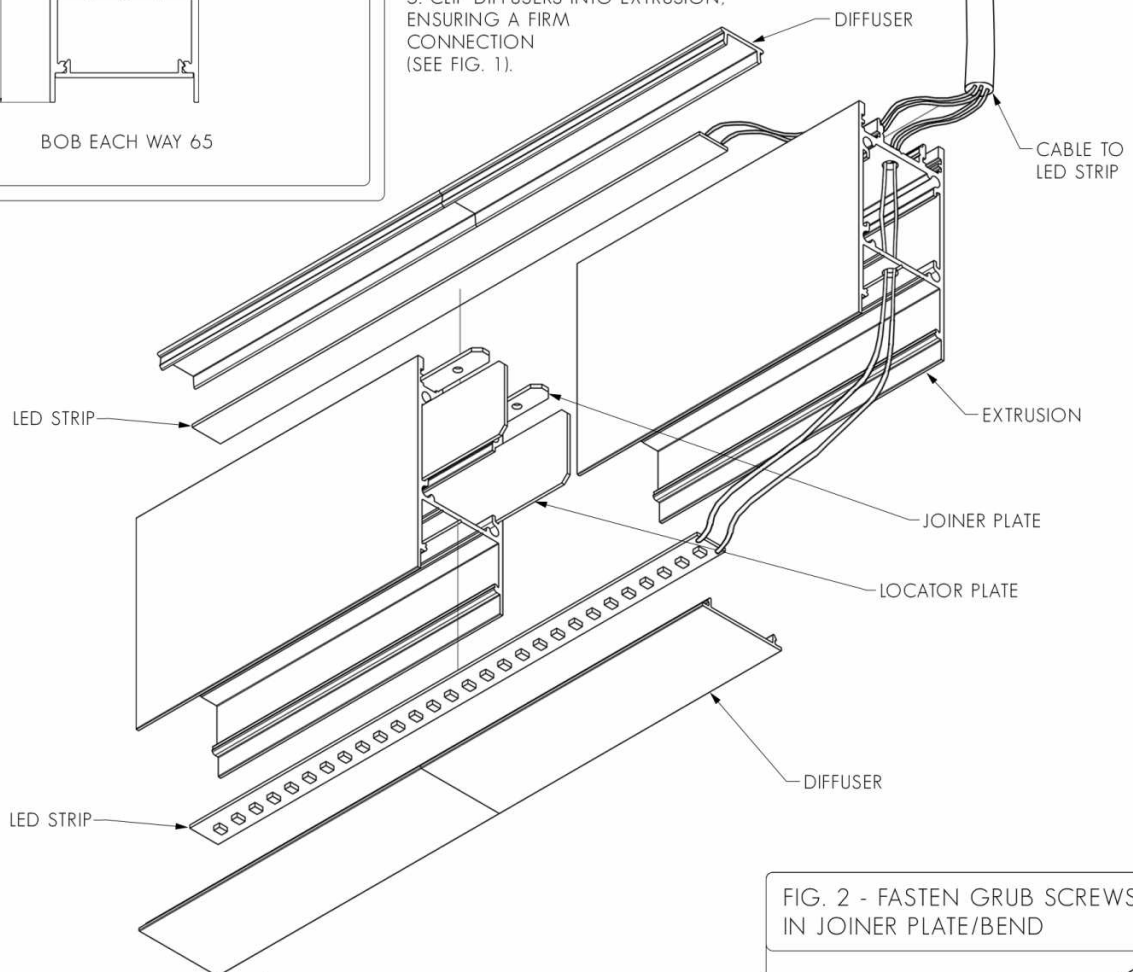


FIG. 1 - ENSURE DIFFUSER IS MOUNTED SECURELY

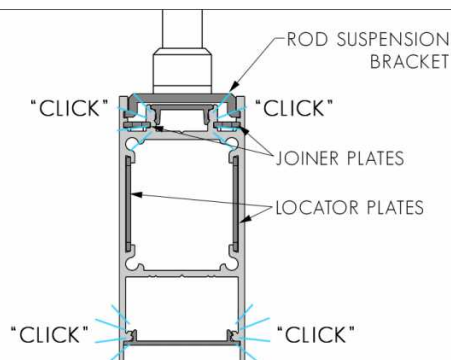
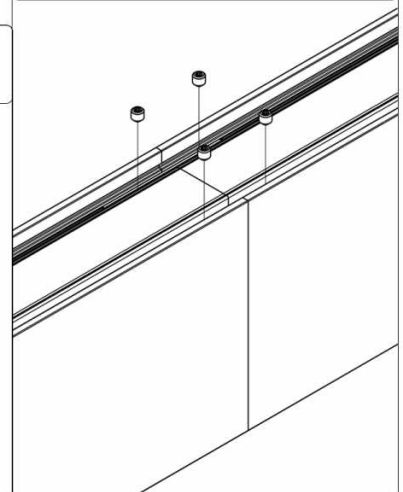


FIG. 2 - FASTEN GRUB SCREWS IN JOINER PLATE/BEND



3

ATTACH CEILING BRACKETS, HANG SUSPENSION RODS, MAKE ELECTRICAL CONNECTION, INSTALL CABLE BASES AND END CAPS

1. ASSEMBLE SUSPENSION COMPONENTS BY SCREWING THE 'SUSPENSION COLLAR' ON TO THE THREADED ENDS OF THE SUSPENSION RODS.

2. FEED THE 'ROD SUSPENSION BASE' THROUGH THE HOLE IN THE 'ROD SUSPENSION BRACKETS', THEN SCREW THE 'SUSPENSION COLLAR' ON TO THE 'ROD SUSPENSION BASE'. THE 'ROD SUSPENSION BASE' SHOULD FIT INTO THE REBATE IN THE 'ROD SUSPENSION BRACKET' WHICH WILL STOP IT FROM SPINNING (SEE FIG. 3).

3. LIFT LIGHT ASSEMBLY UP TO CEILING AND MARK LOCATIONS OF RODS ON CEILING. USE MARKINGS TO CUT 46MMØ HOLES FOR CABLE BASES.

4. SCREW CEILING BRACKETS INTO FRAMING.

5. MAKE ELECTRICAL CONNECTION: CONNECT LED STRIP TAILS TO LED DRIVER.

6. LIFT LIGHT ASSEMBLY AND INSERT SUSPENSION RODS INTO CEILING BRACKETS, STARTING WITH THE POWER SUPPLY END. ADJUST REMAINING ROD SUSPENSION POSITIONS BY LOOSENING COLLARS AND REPOSITIONING. LOCK RODS INTO CEILING BRACKETS BY TIGHTENING GRUB SCREWS. (SEE FIG. 4)

7. PUSH CABLE BASE INTO HOLE IN CEILING (SEE FIG. 5).

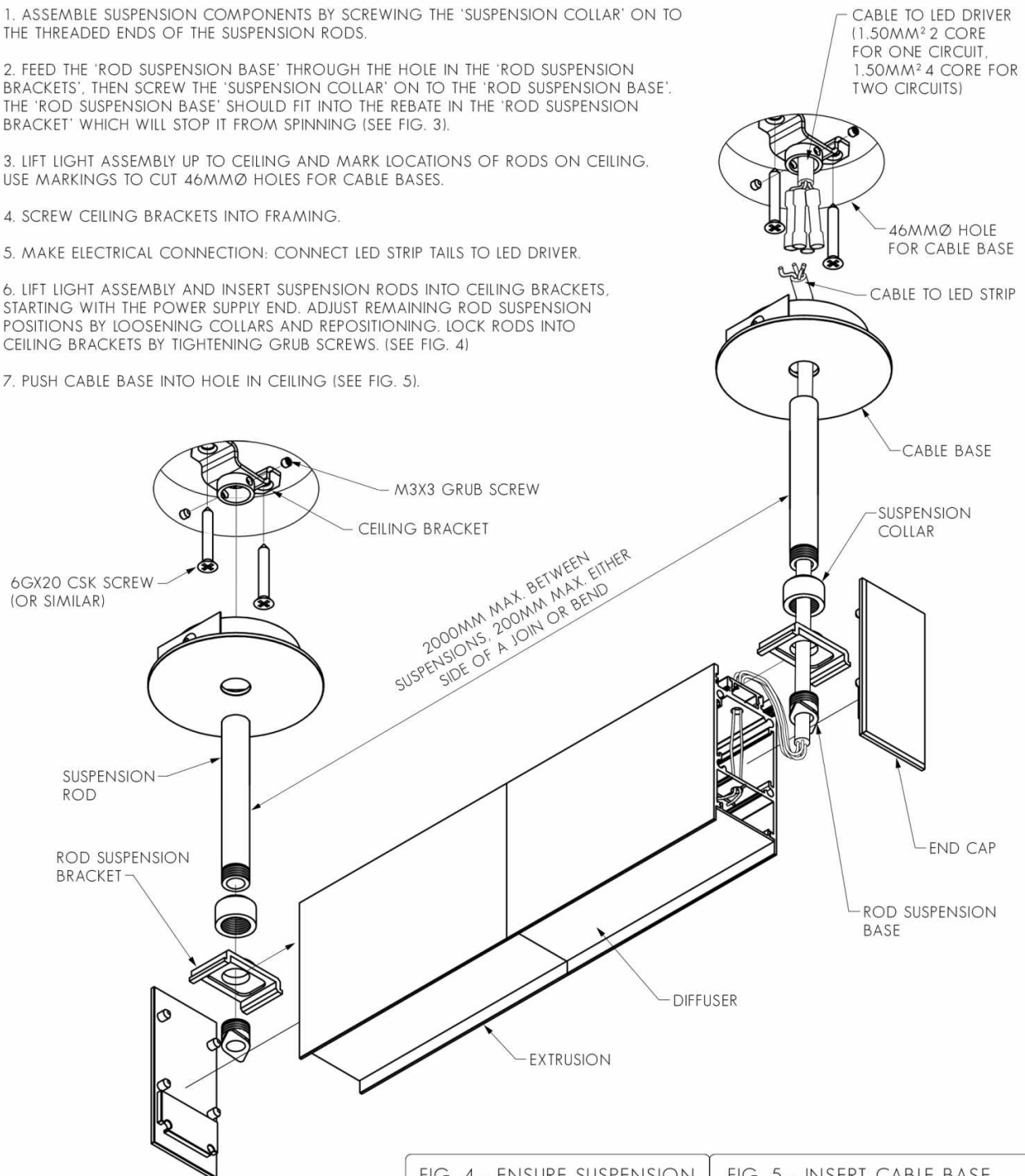


FIG. 3 - ENSURE ROD SUSPENSION BASE IS SECURE IN ROD SUSPENSION BRACKET

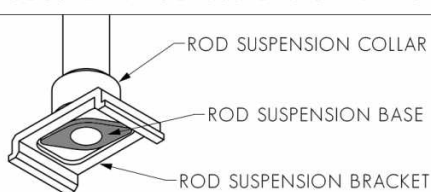


FIG. 4 - ENSURE SUSPENSION RODS ARE TIGHTLY SECURED

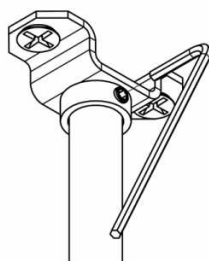
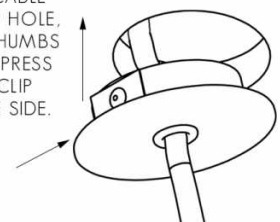
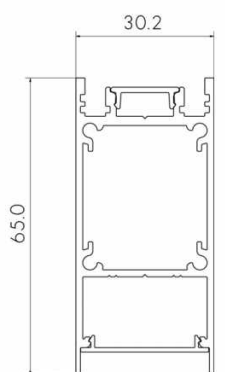


FIG. 5 - INSERT CABLE BASE IN TO CEILING

ANGLE CABLE UP IN TO HOLE, USING THUMBS TO COMPRESS SPRING CLIP ON ONE SIDE.



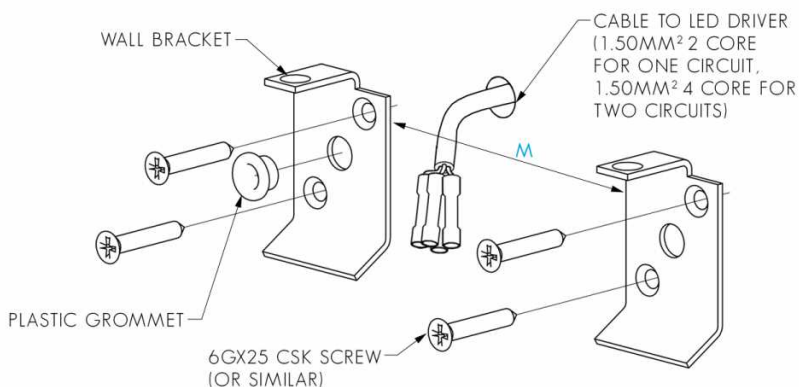
1 PRODUCT OVERVIEW



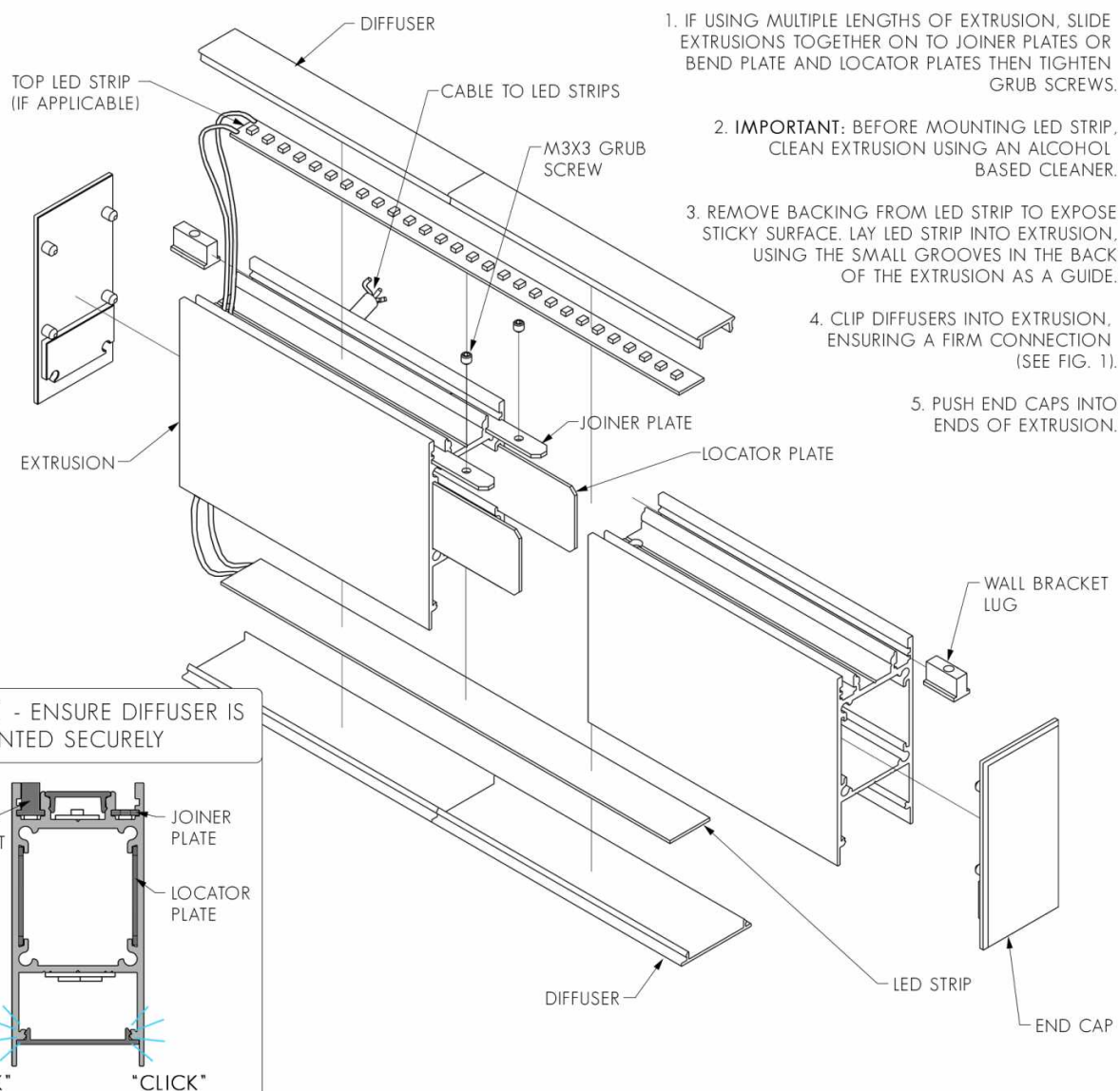
BOB EACH WAY 65

2 FIX WALL BRACKETS IN TO A SOLID FIXING

M = MAX. DISTANCE BETWEEN WALL BRACKETS IS 800MM
MAX. DISTANCE FROM END OR JOIN IN EXTRUSION IS 200MM



3 JOIN EXTRUSIONS, INSTALL LED STRIP, DIFFUSER AND END CAPS



4

MAKE ELECTRICAL CONNECTION, FIX EXTRUSION TO WALL BRACKETS

1. MAKE ELECTRICAL CONNECTION: CONNECT LED STRIP TAILS TO LED DRIVER CABLE, THEN SEAL WITH HEAT SHRINK (OR SEE FIG. 2 IF SUPPLIED WITH MALE/FEMALE CONNECTORS).

2. LIFT EXTRUSION ASSEMBLY AND TIGHTEN LUGS AND WALL BRACKETS TOGETHER WITH THE M3X8 CSK SCREWS, ENSURING A FIRM CONNECTION (SEE FIG. 3).

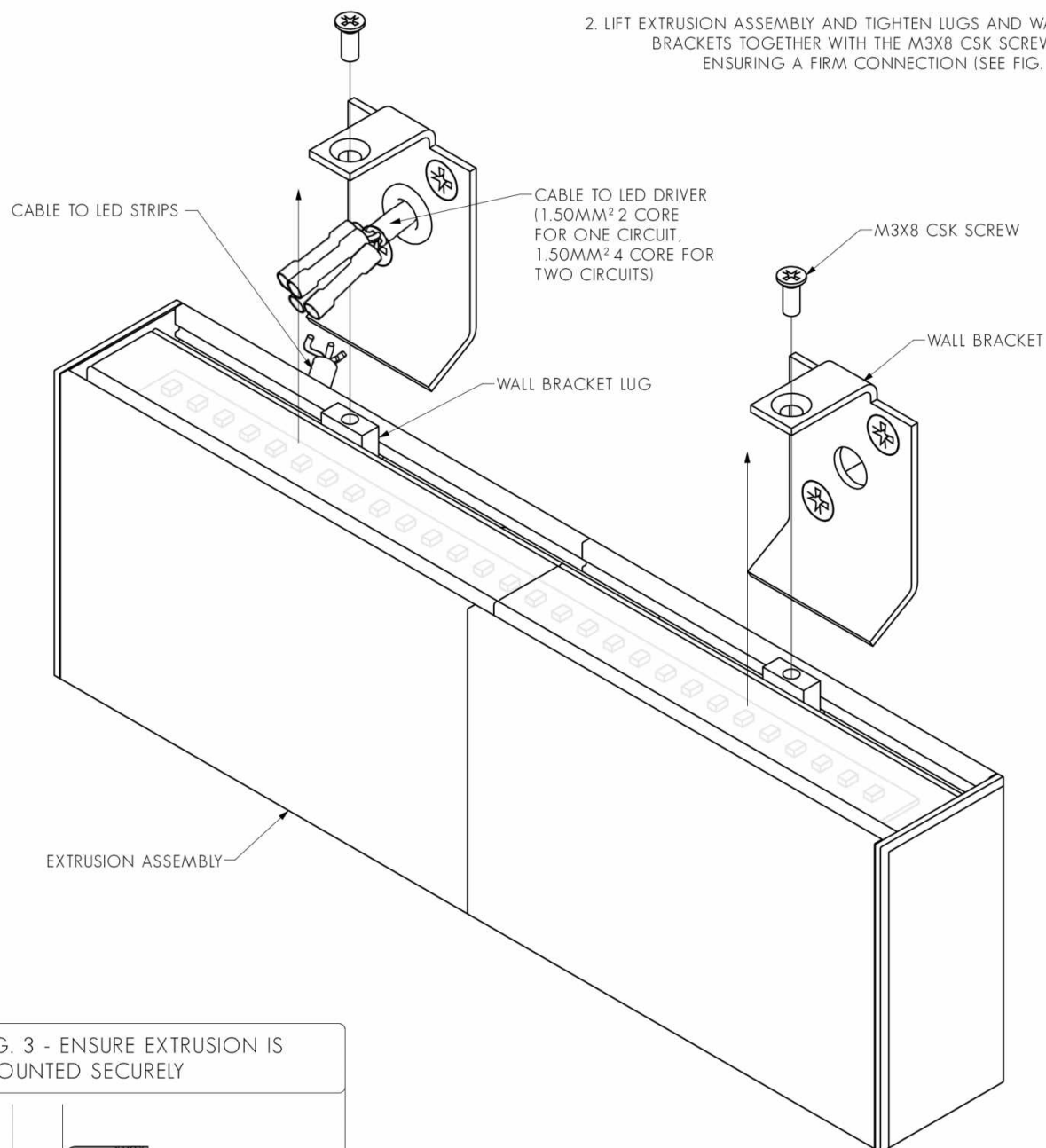


FIG. 3 - ENSURE EXTRUSION IS MOUNTED SECURELY

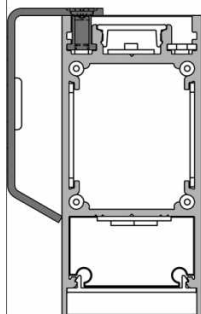


FIG. 2 - MAKE ELECTRICAL CONNECTION

