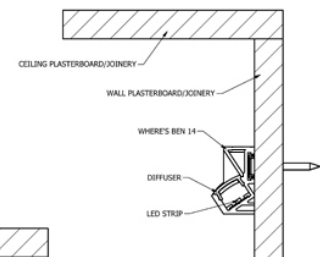
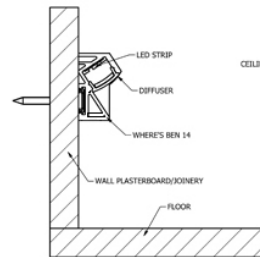
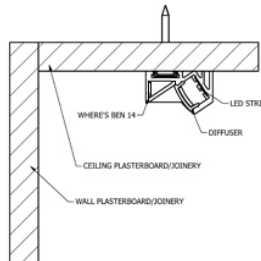
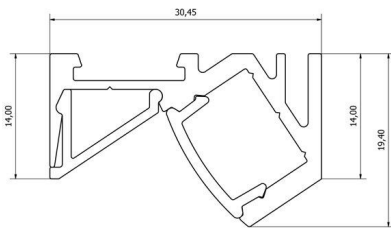


WHERE'S BEN 14



FEATURES

- Recessed or surface mounting
- Asymmetric distribution
- Dot-free and uniform lighting
- V-groove for accurate drilling and strip alignment
- Polycarbonate diffuser – UV resistant
- Max. 14 W recessed, 20 W surface-mounted
- IP 65 20 W strip not feasible

APPLICATIONS

- Under benches and shelving
- Task lighting
- Concealed architectural detail
- Furniture and joinery
- Wall or ceiling washing

DIMENSIONS

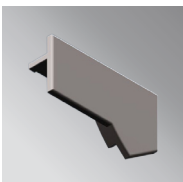
Width 30.45 mm x height 19.4 mm

FINISH

Anodised aluminium with polycarbonate diffuser.
Special powder-coat on request.

MOUNTING

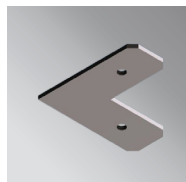
Screw fix (supplied)



EC-WB14-GR



JN-ST-12



JN-90-12