



## Megabay - Highpoint Shopping Centre

The highly anticipated final stage of Highpoint \$300 million redevelopment was recently opened to the public presenting 100 new retail stores. This two-level expansion is the design work of **Grimshaw Architects** in Melbourne, whose initiative was to deliver a sustainable and energy efficient space.

The design includes a roof structure that allows for significant levels of natural light and ventilation that reduces up to 53% of the energy consumption within the building. The ceiling is a beautiful and eye-catching architectural feature, a series of timber panels and blades follow the large vaulted skylight along the curved steel frames.

Lighting design firm **Electrolight** (Melbourne office) was appointed to work on the illumination of this new retail area. To light the ceiling structure, the designers selected the Megabay Accento 8W LED luminaire to create a grazing effect over the timber surface. The luminaire was specified in a warm white colour temperature to accentuate the earthy tones of the timber and with a narrow light distribution to achieve greater coverage along the length of the panels and blades.

The compact size of the Accento and its IP 67 rating made it the perfect luminaire for this application, where it was required for the luminaire to not only provide optimal performance in different weather conditions



but also to be easily integrated within the architecture without becoming an intrusive element.

For more project pictures, visit [buckford.com.au](http://buckford.com.au)

We hope you liked this review.

The B.I.G. Team



**Accento 8**

[Product information>>>](#)

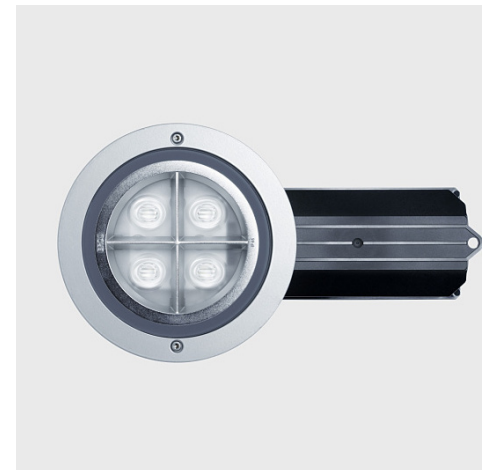


## WE-EF - Werribee Olympic Outdoor Pool

The illumination of olympic and public recreational swimming pools requires efficient luminaires and a quality lighting design to meet the requirements of Australian Standards 2560.2.5. Consideration for energy consumption and maintenance are other major factors to consider.

Werribee olympic outdoor pool is an eight-lane 50m heated pool with ramp access for people with disabilities. Recently Wyndham Council invested \$600,000 into upgrades for this community and public recreational area. The lighting was a major part of the work and **Watermans AHW** was appointed as the consultants to carry out the electrical design work. To meet the recommended lighting criterias for swimming pools, the engineers selected the WE-EF FLA760 400W metal halide. The luminaire is IP66 with a high peak assymetric forward throw, and features a protractor scale for accurate aiming. Maintenance tasks are much easier and no tool is required for relamping.

## ERCO - Compact LED IP65 Recessed Downlight



The Compact LED IP65 features a lens system that produces a particularly efficient and uniform distribution with wide flood and oval flood characteristics.

[Product information>>>](#)

## Megabay - Omnix Miniature LED Marker Light



The Omnix range of sub-miniature luminaires offer a decorative yet functional pixel for your lighting design. Its robust brass construction and waterproof rating allows the Omnix to withstand the harshest of environments to produce stunning effects.

[Product information>>>>](#)



The luminaries also provide sufficient light to the surrounding landscape, making it safe for circulation and visually pleasant for families and visitors using all outdoor facilities.

The B.I.G. Team



**FLA760**

**Product information>>>**

## **Trilux Coriflex - Continuous LED Line Luminaire**



The new Trilux Coriflex offers an all-in-one solution that enables 50% time savings with mounting and almost an unlimited design flexibility in various applications such as industry, retail, education and office.

**Watch the video introduction>>>**

**Product information>>>**

### **OUR BRANDS**

**ERCO**

**we-ef**



**TRILUX**  
NEW LIGHT.

 **megabay**

  
**castaldi**

*Copyright © 2012 Buckford Illumination Group, All rights reserved.*

**Our mailing address is:**

**Buckford Illumination Group**  
PO Box 609  
Port Melbourne, VIC 3207

Phone: 03 9646 8201  
Email: [sales@buckford.com.au](mailto:sales@buckford.com.au)

**Add us to your address book**