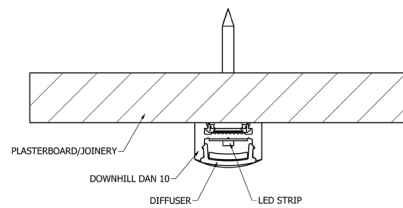
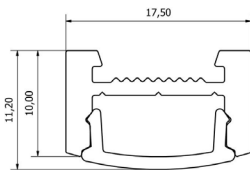


DOWNHILL DAN 10



NOTE - Dotting visible due to extra low profile



FEATURES

- Surface, recessed or suspended mounting
- Unique mounting clip design for easy installation
- V-groove for accurate drilling and strip alignment
- Polycarbonate diffuser – UV resistant
- Straight joiners and L-plates
- Max. 14 W recessed, 20 W surface-mounted
- All IP rated strip options show dotting, IP 65 20 W strip not feasible

DIMENSIONS

Width 17.5 mm x height 11.2 mm

FINISH

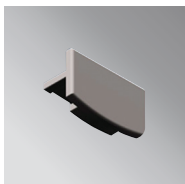
Anodised aluminium with polycarbonate diffuser

MOUNTING

Mounting clip system (not suitable for vertical mounting);
Optional screw fix.

APPLICATIONS

- Under benches and shelving
- Concealed architectural detail / coving
- Furniture and joinery



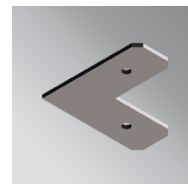
EC-DD10-GR



CFS-12



JN-ST



JN-90



CB-60-W



SWK-1-2m



SRK-1
(Rod ordered separately)