

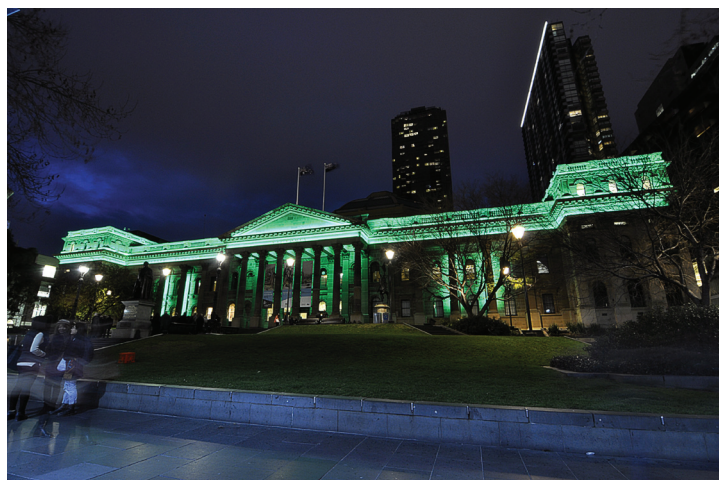
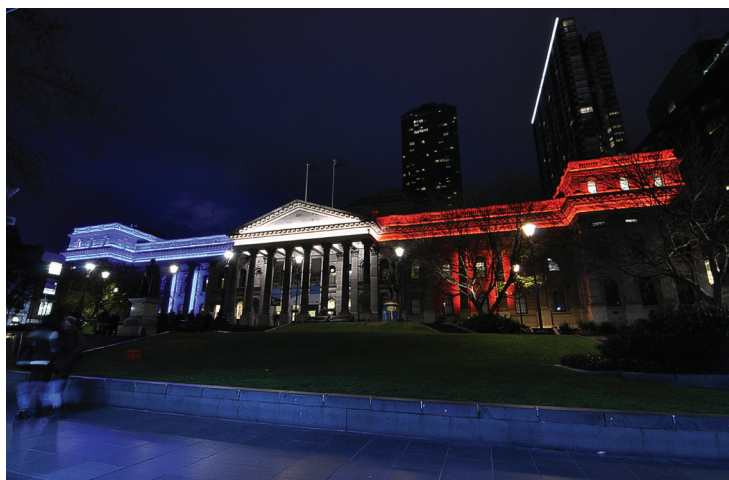


*Images by: BIG*

## Megabay - State Library of Victoria

The State Library of Victoria opened its doors in 1853 with a collection of 3,800 books. Today the iconic heritage building holds more than 2 million books and 16,000 serials, including the diaries of the city's founders, John Batman and John Pascoe Fawkner. An \$83.1 million redevelopment is currently taking place and includes a new outdoor lighting installation designed by award-winning lighting design firm **NDYLight**.

The building is now beautifully lit at night with Megabay Viento XT linear projectors in 1000mm and 500mm modules. The lighting designers specified the luminaires in RGBW, which are controlled by remote DMX drivers to produce colour changing light scenes at night. The IP66 projectors are attached end-to-end and mounted on a ledge of the building facade, creating a continuous linear lighting effect that illuminates the top section of the library. Several Viento XT projectors are also mounted behind four large columns to add vertical illuminance to the front facade. NDYLight designed the energy-efficient lighting installation to highlight the architectural features of the historic landmark without the need for large floodlights or intrusive luminaires.





The library is embraced by many Melburnians and visitors through out the year. It is a hive of activity during the day with people coming and going all the time, while others are happy to sit around the premises for hours. The new lighting upgrade will certainly attract more social interaction and community activities in the CBD area at night.

For more project images, please visit our **website**.

The B.I.G. Team



**Viento XT**  
**Product information >>>**



## **WE-EF - Cornish Miners Monument, Bendigo**

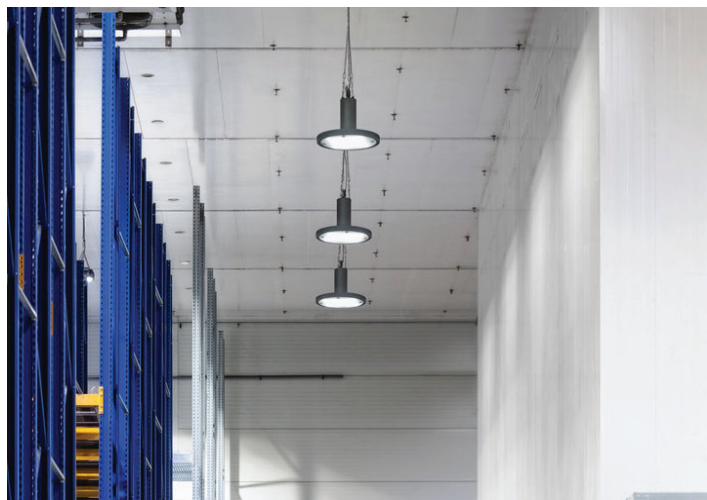
The Cornish Miners statue was erected in 1996 by the Greater Bendigo Council in appreciation of the efforts of all the underground miners of Bendigo and District.

Two WE-EF ETC320 inground uplights were specified in 12W 3000K to light the monument. The luminaires included lens wallwashers to produce vertical illumination over the sculpture. The new lighting not only provides good illumination over the statue that represent the miners, it also emphasises the great detail on the panel on the base, which was dedicated to the miners' wives. Bendigo born artist Ruth Lyon said "At least 50 percent of the [Cornish miners] died in the process either through injury or respiratory related injuries or infections, I said I would take on the project if we could represent the women because the women that were left were unskilled largely and they often had hoards of children to look after. And so there is a panel on that particular base dedicated to what women did to survive the goldfields".



**ETC320 Inground**  
**Product information >>>**

## Trilux Mirona RL LED



Robust and elegant at the same time, the Mirona RL LED is not only ideal for industrial applications but also provides optimum lighting solutions for decorative and prestigious areas. Suitable for hot assembly lines, extremely high hall ceilings and cold storage areas – the Mirona LED range is ideal for industrial applications thanks to homogeneous, glare-free light, extremely high protection ratings and long lifespans. Available in narrow and narrow/wide distributions and up to 24000 lumen output.

**Lesima LED Pendant**  
Product information >>>

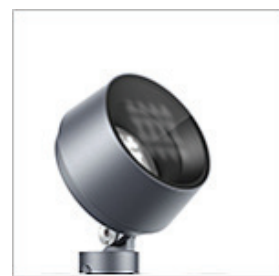


## New ERCO Kona LED Projector



Great for the illumination of large buildings. The Kona's round tapered housing ensures maximum visual comfort with excellent glare control. The luminaire is available in three sizes with a wide range of light distributions – from accented lighting at a great distance using narrow spot Spherolit lenses to wide flood and oval flood distribution operations all the way through to homogeneous washlighting with wallwash lens. High luminous flux packages define Kona as the perfect lighting tool for great projection distances and allows the luminaires to be spaced far apart. .

**Kona LED Projector**  
Product information >>>



## OUR BRANDS

**ERCO**

**we-ef**



**TRILUX**  
NEW LIGHT.

**megabay**  
ILLUMINATE YOUR WORLD

**CASTALDI**  
LIGHTING

Copyright © 2015 Buckford Illumination Group, All rights reserved.

**Our mailing address is:**

**Buckford Illumination Group**  
PO Box 609  
Port Melbourne, VIC 3207

Phone: 03 9646 8201  
Email: [sales@buckford.com.au](mailto:sales@buckford.com.au)

JOIN THE B.I.G. TEAM ON

**facebook**

CLICK HERE >>>