

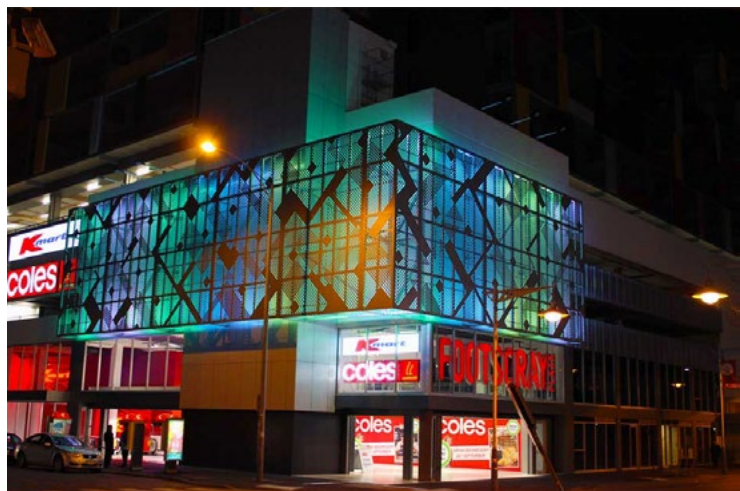


Image by: David B Simmonds

Megabay - Centricity, Footscray Plaza

The construction of a residential development above Footscray Plaza has finally concluded with the installation of a 240-square-metre screen that lights up with a colourful spectacle at night. The screen titled 'Centricity', is Victoria's largest LED-programmed steel sculpture designed by Melbourne artist **Matthew Harding** and symbolises Footscray's diversity. "The multicultural atmosphere inherent to Footscray has created a hive of activity and a rich cultural melting pot that is distinct and unique. This is illustrated in the interweaving of art and architecture in 'Centricity'" said the artist.

The prime 5-level residential building - with an average rating of 5.2 stars apartments - was designed by **JAM architects**. **ADP Consulting Engineers** were the appointed professionals to provide consultancy for several of the building services, including specialist lighting design. To illuminate the large artwork structure, the engineers selected the Megabay Viento XT RGBW linear projectors. These LED luminaires are installed along the top and bottom plates of the steel frame. They are controlled by a DMX system and are programmed to produce a series of colour patterns for a particular season or event throughout the year.



Located in the centre of Footscray, this new development at 18 Albert Street introduces a contemporary new style of architecture design with energy-wise elements for apartment living.

For more project images, visit the **Buckford website**.

The B.I.G. Team

Viento XT
Product Information >>>

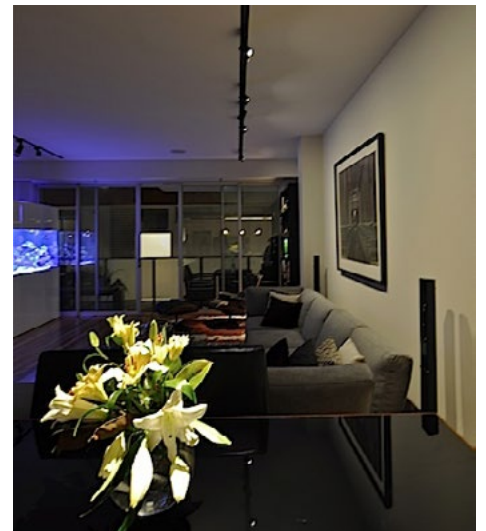


ERCO - Richmond Residence

A series of ERCO luminaires have been selected for the interior lighting of a residential project in Richmond. The principles of architectural lighting are wisely applied within the modern style residence, where eye-catching elements in the space have been individually highlighted to create not only a contemporary gallery-look and feeling but also an energy efficient, low-maintenance lighting system.

Two linear 3-circuit track run along the living area with 6W Pollux wallwashers evenly illuminating a long white wall with a large photo print. The indirect lighting - created by the wallwashing effect - provides a soft general ambient illumination, while Pollux spotlights accentuate floral arrangements in the room. A Pollux framer attachment is used to frame the black & white print, giving another dimension to this piece when the wallwashers are turned off. Three ERCO Starpoint pendants with 50W halogen QT12 lamps are installed over the kitchen benchtop for task lighting and 18W Quintessence LED recessed wallwashers provide vertical illumination to the kitchen cupboards and joinery behind. All LED luminaires were selected in warm white colour temperature with dimmable gear.

For more project images, visit the **Buckford website**.



Pollux LED Spotlight
Product Information >>>

WE-EF OLV300 NEW LED SERIES



The OLV300 LED versions feature WE-EF's advanced LED lens technology that ensures precise light distribution.

A versatile range of beam distributions are available for a variety of lighting tasks. For symmetric beam distributions the choice is [M] medium and [EES] very narrow 'sharp cut-off'. Additional distributions include an [S70] 'side throw' lens as well as two 'forward throw' lenses: [A60] asymmetric; and [R65] rectangular.

Available in two sizes and two colour temperatures (3000 K and 4000 K), the OLV300 LED luminaires can achieve a nominal wattage of up to 48 W.

OLV300
Product Information >>>



TRILUX POLARON IQ LED



The new Polaron IQ LED with a timeless design that easily blends into the interior architecture, comes in two different ring sizes and light emissions, as well as the option of emitting direct and indirect light according to requirements. The Polaron is available in warm and cool colour temperatures, optionally as a recessed, semi-recessed, surface-mounted or suspended luminaire, or with only indirect light emission, and can be installed as a wall or ceiling fixture.

Polaron IQ LED
Product Information >>>



OUR BRANDS

ERCO

we-ef



TRILUX
NEW LIGHT.

megabay
ILLUMINATE YOUR WORLD

CASTALDI
LIGHTING

Copyright © 2014 Buckford Illumination Group, All rights reserved.

Our mailing address is:

Buckford Illumination Group
PO Box 609
Port Melbourne, VIC 3207

Phone: 03 9646 8201
Email: sales@buckford.com.au

Add us to your address book