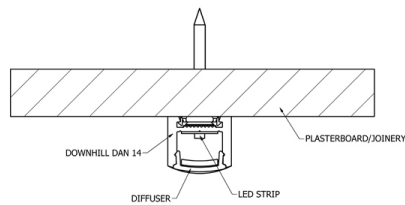
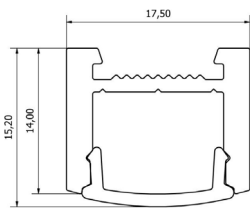


DOWNHILL DAN 14



FEATURES

- Surface, recessed or suspended mounting
- Dot-free and uniform lighting
- Unique mounting clip design for easy installation
- V-groove for accurate drilling and strip alignment
- Polycarbonate diffuser – UV resistant
- Straight joiners and L-plates
- Max. 14 W recessed, 20 W surface-mounted
- IP 65 20 W strip not feasible

APPLICATIONS

- Under benches and shelving
- Task lighting
- Retail lighting
- Concealed architectural detail
- Furniture and joinery

DIMENSIONS

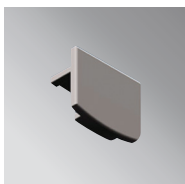
Width 17.5 mm x height 15.2 mm

FINISH

Anodised aluminium with polycarbonate diffuser.
Special powder-coat on request.

MOUNTING

Mounting clip system (not suitable for vertical mounting);
Optional screw fix.



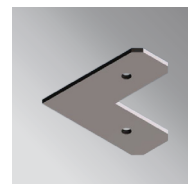
EC-DD14-GR



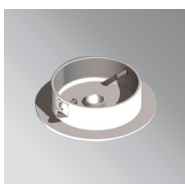
CFS-12



JN-ST



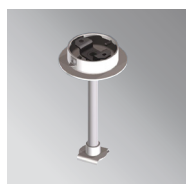
JN-90



CB-60-W



SWK-1-2m



SRK-1
(Rod ordered separately)