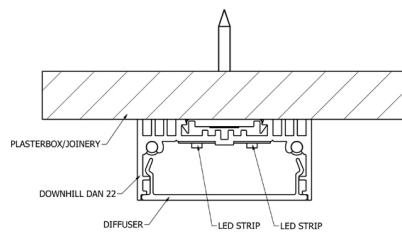
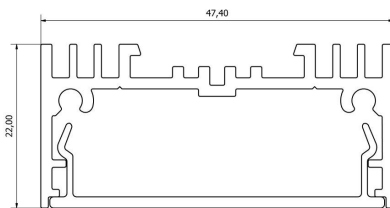
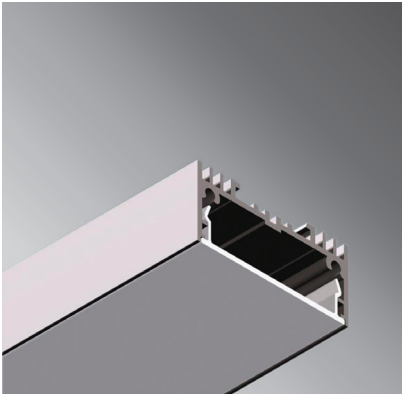


## DOWNHILL DAN 22



### FEATURES

- Surface, recessed or suspended mounting
- Unique mounting clip design for easy installation
- V-groove for accurate drilling and strip alignment
- Polycarbonate diffuser – UV resistant
- Max. 2 x 14 W recessed, 2 x 20 W surface-mounted
- IP 65 20 W strip not feasible

### APPLICATIONS

- Under benches and shelving
- Task lighting
- Retail lighting
- Concealed architectural detail
- Furniture and joinery
- Ambient lighting

### DIMENSIONS

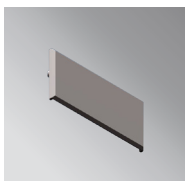
Width 47.4 mm x height 22 mm

### FINISH

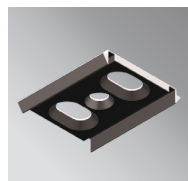
Anodised aluminium with polycarbonate diffuser.  
Special powder-coat on request.

### MOUNTING

Mounting clip system (not suitable for vertical mounting);  
Optional screw fix.



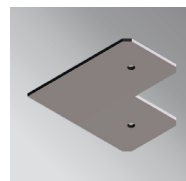
EC-DD22-SA



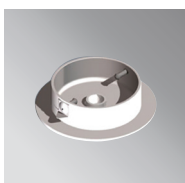
MC-23



JN-ST-23



JN-90-23



CB-60-W



SWK22-1-2m



SRK-2  
(Rod ordered separately)