



Image by: *Peter Clarke Photography*

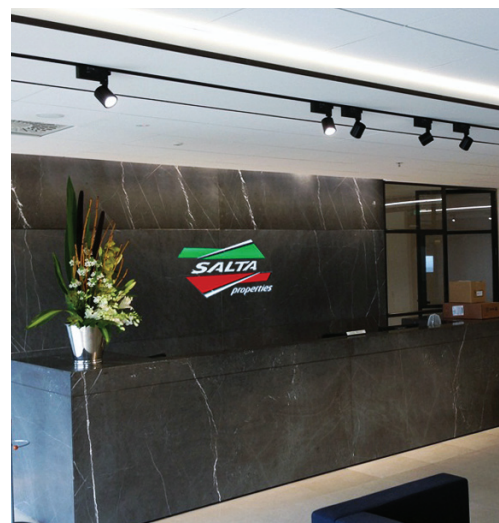
SALTA PROPERTIES - NEW OFFICE FIT OUT

Salta Properties new headquarters at 35 Collins Street, Melbourne reflects the company's commitment to quality and exceptional design. The renowned property developer selected **CARR Design Group** to create a sophisticated workplace that makes an architectural design statement and embraces light and space.

A series of ERCO Pollux LED Spotlights illuminate the elegant foyer, which is adorned with large marble tiles that extend from the reception desk to the walls. The Pollux provides general lighting and creates accent illumination over key elements in the room that includes the company's iconic green, red and white logo behind the reception desk. The compact spotlight makes a visual impression of less volume and a classic design that easily integrates with modern interior architecture. The luminaires are mounted on recessed flanged track and were specified in black colour finish to match with the cool and monochrome finishes of the space.

The Downhill Dan 14 LED profile is used for the cove lighting throughout the foyer and the corridors. This installation increases the brightness perception with indirect lighting and highlights the ceiling architectural feature. The LED profile is also used in some of the offices to provide shelf joinery lighting.

The offices are also illuminated with ERCO Compact LED Downlights. The designers specified the luminaires with the oval flood distribution to produce a linear light beam over the large executive desks.



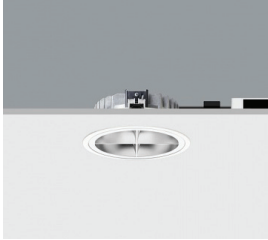
The application of indirect lighting and the selection of luminaires with precise optics creates a glare-free working environment. All luminaires were specified with DALI gear to add flexibility and control to the lighting system and in 4000K colour temperature to emphasize the cool colours and textures of the furniture and room surfaces.

For more project images, please visit **Buckford Website**.

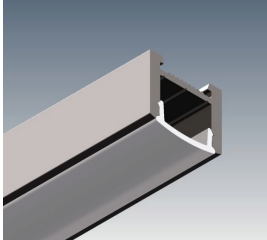
The B.I.G. Team



Pollux
Product
information >>>



Compact
Product
information >>>



Downhill Dan 14
Product
information >>>



Images by: Peter Clarke Photography



WE-EF - Mornington Activity Centre Laneway Strategy

The Mornington Peninsula Shire developed the Mornington Activity Centre Laneway Strategy for seven laneways along Main Street between The Esplanade and the Eastern Ring Road roundabout. The redevelopment aims to facilitate safer passage, increase user numbers and improve the overall amenity and appearance.

The laneways upgrade included the installation of WE-EF VFL540 street lights and FLC131 LED projectors. The VFL540 was specified with the S70 linear side throw distribution, which is suitable for walkway and pathway lighting, while the FLC131 projectors were specified with LED Blue colour to add some feature lighting to the laneways.



VFL530 LED Street & Area Light
Product information >>>

New TRILUX Onplana Surface Mounted Luminaire



The new Trilux Onplana exhibit pleasant, uniform light emission, and their unobtrusive minimalist design has them blending into any interior, enabling the light and architecture to come to the fore. Combine this with its energy efficient nature, and you've really got a radiance to be excited about. The luminaire is also suitable for wall mounting, available in 3000K and 4000K and in two sizes, 234mm and 316mm diameters.

Onplana
Product information >>>



RCL - Remote Controlled Lighting



Remote Controlled Lighting Ltd (RCL) is the only company in the world that specialises in the design and manufacturing of remote controlled spotlights. With over 10 years experience in the lighting industry, RCL has established itself as the world leader in remote controlled architectural lighting. The RCL product range includes LED spotlights, recessed downlights and digital controllers.

RCL
Products information>>>



OUR BRANDS

ERCO

we-ef



TRILUX
NEW LIGHT.

megabay
ILLUMINATE YOUR WORLD

CASTALDI
LIGHTING

Copyright © 2015 Buckford Illumination Group, All rights reserved.

Our mailing address is:

Buckford Illumination Group
PO Box 609
Port Melbourne, VIC 3207

Phone: 03 9646 8201
Email: sales@buckford.com.au

JOIN THE B.I.G. TEAM ON

facebook

CLICK HERE >>>